



ScrewGuard - Digital Washer



System for monitoring of detachable screw connections

In structures subject to high loads, such as steel construction, industrial plants, wind turbines, cranes, or pipeline construction, bolted connections are safety-critical. They ensure the stability and functionality of the structure. Factors such as assembly errors, corrosion, material fatigue, and excessive or decreasing preload can have serious consequences and must be checked regularly.

ScrewGuard is a digital, cloud-enabled sensor solution that is easy to install and enables reliable online monitoring of critical screw connections.



Meyer Industrie-Electronic GmbH – MEYLE

Carl-Bosch-Straße 8
49525 Lengerich/Germany

Tel.: +49 (0)5481-9385-0
Fax: +49 (0)5481-9385-12

Internet: www.meyle.de
E-Mail: sales@meyle.de



ScrewGuard - Digital Washer



Access to previously unknown knowledge
in Real Time



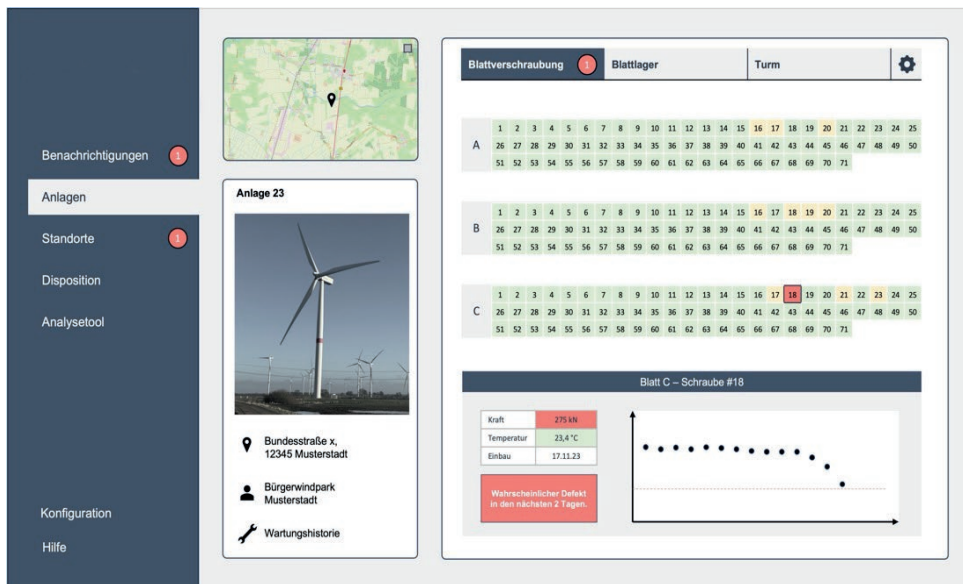
Force, temperature, vibrations:
The integrated sensors measure precisely to provide a
comprehensive overview of the condition of the wind turbine.



Sensoren und Edge Device



analytics



Dashboard: The intuitive dashboard provides a clear display
of data, including a traffic light system for maintenance
requirements, trend analyses and lifetime estimates.

Avoiding risks and reducing downtime: Preventive maintenance
and early identification of problems maximize plant availability.

Cost savings: Minimization of maintenance and repair costs
through predictive analyses and optimized operating conditions.