

# INCREMENTAL ENCODER MyInc

# AINS40 AINS40Z

AINS40/AINS40Z

- Up to 10.000 steps in 2500 cpt
- Applications: micro-robotics, printing...

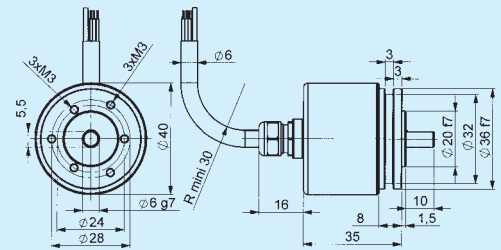


## SPECIFICATIONS

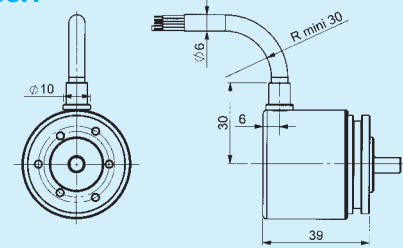
## DIMENSIONS

	<b>AINS40</b>	<b>AINS40Z</b>		
• COVER	Aluminium	Zinc alloy	• MAX. SPEED	12 000 min <sup>-1</sup>
• BODY	Aluminium	Zinc alloy	• RADIAL SHAFT LOADING	20 N
• SHAFT	Stainless steel	Stainless steel	• AXIAL SHAFT LOADING	10 N
• TORQUE	0,2 Ncm	0,2 Ncm	• INERTIA	10 gcm <sup>2</sup>
• WEIGHT	110 g	100 g	• PROTECTION	IP 54

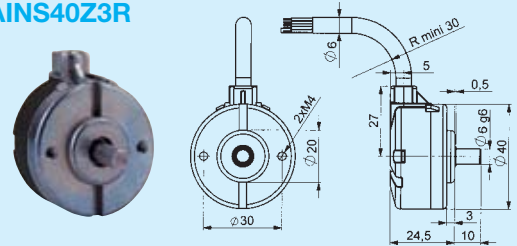
**AINS403A**



**AINS403R**



**AINS40Z3R**



## ORDERING CODE

AINS40  
AINS40Z

Shaft Ø  
06 = 6 mm

Output circuit  
2 = 5 V RS422  
5 = 11-30 V Driver  
9 = 5-24 V Driver

Output signals  
9= A,  $\bar{A}$ , B,  $\bar{B}$ , 0,  $\bar{0}$   
7= A,  $\bar{A}$ , B,  $\bar{B}$   
5= A,  $\bar{A}$   
A= Index gated on A  
N= Index ungated

Connection  
AINS40 :  
3A = shielded cable, axial output  
3R = shielded cable, radial output  
AINS40Z :  
3R = shielded cable, radial output

Resolution  
AINS40 : 2500 max  
AINS40Z : 1024 max



Meyer Industrie-Electronic GmbH - MEYLE  
Carl-Bosch-Straße 8 Tel.: +49 54 81-93 85-0 Internet: www.meyle.de  
49525 Lengerich/Germany Fax: +49 54 81-93 85-12 E-Mail: sales@meyle.de