

INCREMENTAL ENCODER MyInc

AINS58

- Industry Standard Size Ø 58 mm
- IP 65 Protection
- 4.75 to 30 Volts, RS 422 Compatible
- 300 kHz Maximum Frequency
- Resolutions up to 2499 cpt
- Economical version



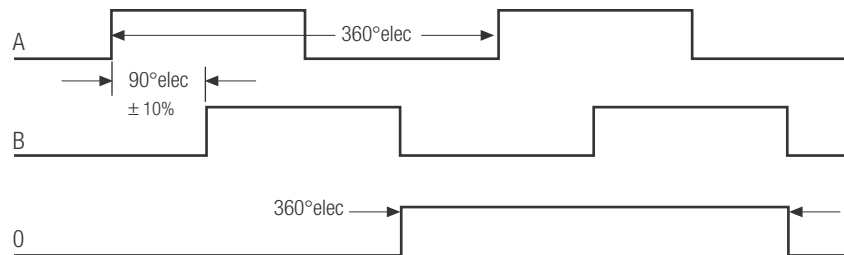
Electrical Specifications

Supply Voltage	4.75-30 VDC
Current Consumption	40 mA (max.)
Output Circuit	Push-Pull, RS 422A
Impulse Frequency	300 kHz (max.)
Logic Level (high)	Vcc - 0.7 Volt
Logic Level (low)	0.25 Volt (max.)
Short Circuit Protection	100 %

Mechanical Specifications

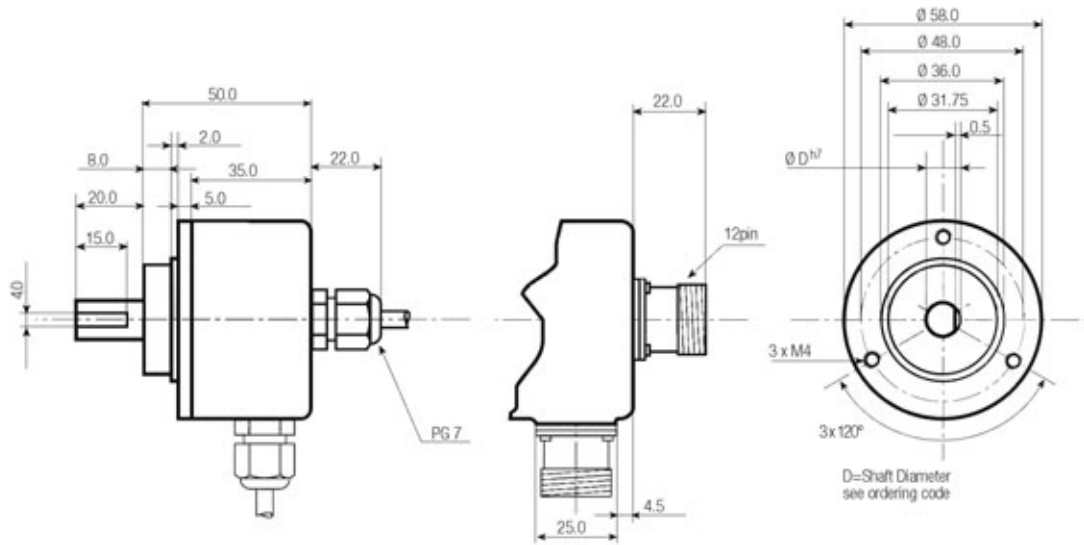
Cover	Aluminium
Body	Aluminium
Shaft	Stainless steel
Speed	8000 RPM (max.)
Torque	> 0.05 Nm
Loading	Axial 40 N, Radial 30 N
Protection	IP 65
Temperature	-20 °C . . . +70 °C +100° C optional
Weight	320 g

Output Signals



A Leads B in the CW Direction (facing shaft)
Complimentary channel also available





Connections

Function	Cable Colours, 3A, 3R	12 Pin Connector, 6A, 6R	7 Pin Connector, 7A, 7R	10 Pin Connector, 10A, 10R
0 Volt	white	1	F	F
+ Volt	brown	2	D	D
A	green	3	A	A
B	yellow	4	B	B
0	grey	5	C	C
\bar{A}	pink	6	G	H
\bar{B}	blue	7	E	I
$\bar{0}$	red	8		

ORDERING CODE

AINS58

Shaft \varnothing
 06 = 6 mm
 08 = 8 mm
 10 = 10 mm
 04 = 1/4"
 09 = 3/8"

Output Circuit
 A5 = Push Pull
 4.75 to 30 VDC
 A2 = Line Driver 5 VDC,
 RS 422
 A9 = 8-30 VDC
 Line Driver 5 VDC,
 RS422

Output Signals
 9 = A+B+0+Compliments

Connection
 3A = shielded cable, 2 m,
 axial output
 3R = shielded cable, 2 m,
 radial output
 6A = 12 pin connector,
 axial output, cw
 6R = 12 pin connector,
 radial output, cw
 7A = 7 pin connector,
 axial output
 7R = 7 pin connector,
 radial output
 10A = 10 pin connector,
 axial output
 10R = 10 pin connector,
 radial output

Resolution
 2499 max.